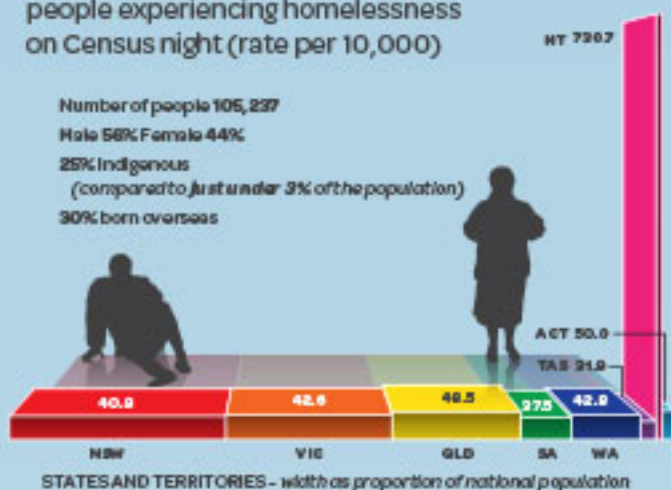




# On any given night in Australia **1 in 200** people are homeless

## Where are they?

State and Territory distribution of people experiencing homelessness on Census night (rate per 10,000)



## How old are they?



75+	2% (2,028)
65-74	4% (4,174)
55-64	8% (8,649)
45-54	12% (12,507)
35-44	14% (14,494)
25-34	18% (19,312)
19-24	15% (15,325)
12-18	10% (10,913)
Under 12	17% (17,845)

## Where do they stay?



## References

Australian Bureau of Statistics:  
*Census of Population and Housing: Estimating Homelessness, 2012*  
 Australian Institute of Health and Welfare:  
*Specialist Homelessness Services 2011-12, 2012*

## Who are they?

Of people who stay in boarding houses: 74.8% male, 25.2% female



Of people who sleep rough: 67.6% male, 32.4% female



Of people staying in supported accommodation for the homeless: 49% male, 51% female



## Why are they homeless?

From polling of people seeking support from specialist homeless services:



25%	Domestic and family violence
15%	Financial difficulties
13%	Housing crisis
10%	Inadequate or inappropriate dwellings
6%	Relationship or family breakdown
5%	Housing affordability stress
26%	Other reasons



Produced by Homelessness Australia

Homelessness Australia

@homelessnessaus

www.homelessnessaustralia.org.au

