

The N&W Metro AOD service includes the following partner organisations. Your treatment could be provided by any one of these agencies.



NORTH & WEST METRO

ALCOHOL & OTHER DRUGS SERVICE



DRUG & ALCOHOL TREATMENT, TRAINING AND SUPPORT



We acknowledge the traditional custodians of Australia and we welcome all Aboriginal and Torres Strait Islander people to our service.

Front Cover: Artwork inspired by Chris Thorne. There are five pillars that are upheld by the residents and staff at Odyssey House Victoria.

This artwork represents counting these pillars on one hand. They are Respect, Concern, Honesty, Trust and Love.



ODYSSEY HOUSE
VICTORIA



North & West Metro Alcohol & Other Drugs (AOD) Service

Odyssey House Victoria and UnitingCare ReGen are working in partnership with a range of community local health and welfare organisations to deliver treatment services across North and West metropolitan Melbourne.

Each Victorian area has its own telephone number. The number for the north and west metropolitan region is 1800 700 514 (freecall).

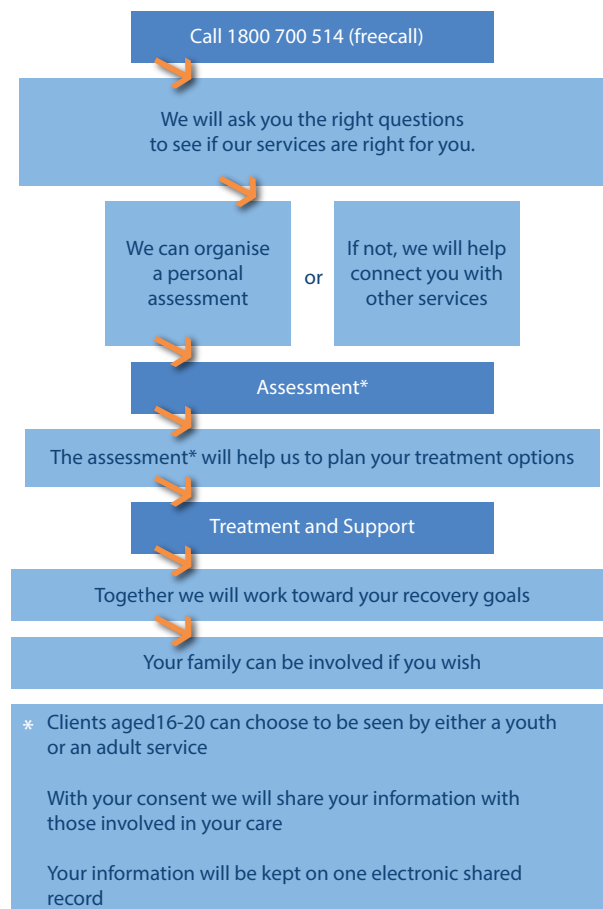
Further information regarding treatment services in other areas can be found by contacting **24hr DirectLine on 1800 888 236**.



Alcohol & Other Drug (AOD) Treatment Services

- Intake and Assessment – a centralised service to coordinate people's needs and entry into treatment services
- Counselling – including a range of individual services and group programs
- Non-Residential Withdrawal – supporting people to undertake withdrawal at home or as an outpatient
- Care & Recovery Co-ordination – a broad support service for people with more complex needs
- Referral – access to a range of other AOD and community support services

What to expect from our services



Eligibility

Our Intake staff will help identify your individual needs and which services will provide the most suitable support.

Other Services

Odyssey House Victoria and UnitingCare ReGen provide a range of other services to support individuals and families affected by AOD use. These services include:

- Youth counselling
- Residential withdrawal
- Residential rehabilitation