

# HYDDI

A joint project of the Department of Human Services, (Housing & Community Building) in conjunction with the Department of Health, (Mental Health, Drugs & Regions Division) It is implemented by a partnership of the Substance Use and Mental Illness Treatment Team of North Western Mental Health; Hope Street Youth and Family Services and Melbourne Citymission.



## Who is able to access HYDDI services?

All SAAP funded homeless youth services operating in the Northern and Western DHS catchment areas are welcome to use HYDDI service

Northern	Western
Banyule Nilumbik Moreland Hume Darebin Melbourne City Whittlesea Yarra	Maribrynong Wyndham Brimbank Hobsons Bay Melton Moonee Valley

### To contact a HYDDI Clinician

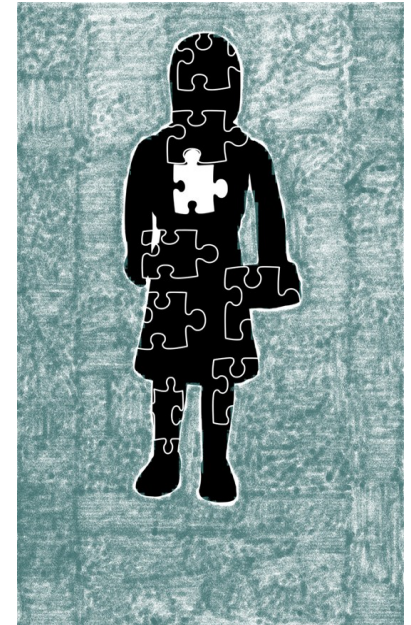
Northern area, mobile: 0409029102  
or Hope Street office: 03 9380 1403

Western area, mobile: 0407019586  
or Sunshine WRAP office: 03 9312 5357

# HYDDI

## Homeless Youth Dual Diagnosis Initiative

A service for workers engaged with young homeless clients who present with co-existing substance use issues and mental illness.



## What is Dual Diagnosis?

The term dual diagnosis is most commonly used to describe a person who is experiencing issues with both their mental health and substance use.

Within this definition, when we talk about substances we mean both legal and illegal substances, i.e. cannabis, amphetamines, alcohol and so on.

## Dual Diagnosis within the homeless youth sector

Dual diagnosis is more prevalent among homeless young people than the broader population of young people in Australia.

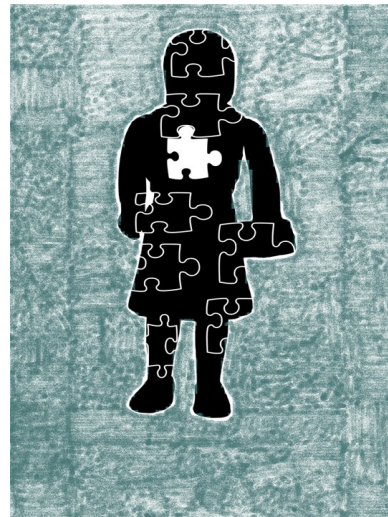
Homelessness can potentially lead to young people experiencing mental health issues and problematic substance use. These co-occurring issues may also lead to the young person becoming homeless. Whichever the case it is recognised that dual diagnosis has a significantly impact on young people's ability to keep their lives on track and resolve homelessness.

(Australia's Homeless Youth: Report of NYCI into Youth Homelessness)

## The HYDDI project aims to.....

Improve the outcomes for young people who are homeless and are experiencing the impact of dual diagnosis by.....

- Building the capacity of the homeless youth sector to respond to the needs presented by young people, who are experiencing homelessness and have co-occurring mental health and substance use concerns.
- Fostering ongoing and helpful partnerships between mental health, drug and alcohol and homes services.



## How can a HYDDI clinician help you?

HYDDI offers the following services to all homeless youth services in the North-Western DHS region of Melbourne.

- Primary consultation; Offering a confidential, specialist mental health and substance use assessment and brief interventions
- Secondary consultation; advice on brief interventions and strategies, information on referral for specialist treatment, services co-ordination and clinical problem solving
- Individual and group supervision on working with clients with a dual diagnosis of substance use and mental illness
- Short term co-case management of clients with dual diagnosis
- Training and education



Referral is easy, just call us!